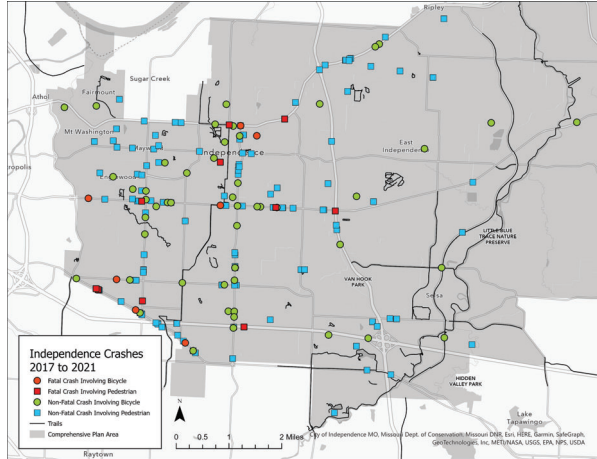


Project Data

Safety Data

Crashes Involving Cyclists or Pedestrians



- Areas with higher concentrations of crashes correspond to major streets with higher traffic speeds and volumes

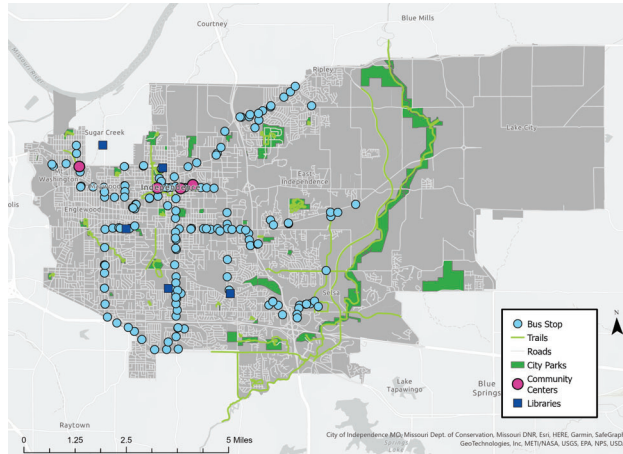
Transportation Data

Mode of Transportation to Work (American Community Survey)

	City of Independence		Jackson County		State of Missouri		United States	
	Count	Share	Count	Share	Count	Share	Count	Share
Private Auto	48,250	84.9%	258,982	72.7%	2,311,270	79.4%	113,668,587	73.2%
Auto Passenger	3,808	6.7%	23,155	6.5%	235,784	8.1%	13,354,506	8.6%
Walking	284	0.5%	3,919	1.1%	55,307	1.9%	3,882,124	2.5%
Biking	284	0.5%	712	0.2%	5,822	0.2%	776,425	0.5%
Transit	114	0.2%	4,275	1.2%	29,109	1.0%	6,521,968	4.2%
Work from Home	3,921	6.9%	60,204	16.9%	244,517	8.4%	15,062,641	9.7%
Total	56,832		356,234		2,910,919		155,284,955	

- Independence has lower rates of active transportation and transit use compared to the county, state, and nation.
- Other demographic and economic data indicate a need and demand for affordable transportation options.

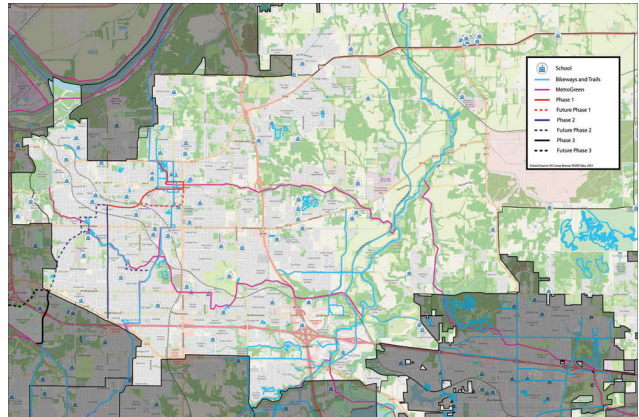
Existing Infrastructure & Key Destinations



- Parks, community centers, and libraries have been identified by public input as key destinations.

Planned Infrastructure

Truman Connected & MARC MetroGreen Corridor



- Planned infrastructure can serve as a spine for future connections into neighborhoods and commercial districts.

Sidewalk Conditions Near Schools

Fairmount



Procter



William Yates



Cler-Mont



- These schools are presented as examples. There are a wide variety of sidewalk and ADA ramp conditions near schools across the city.